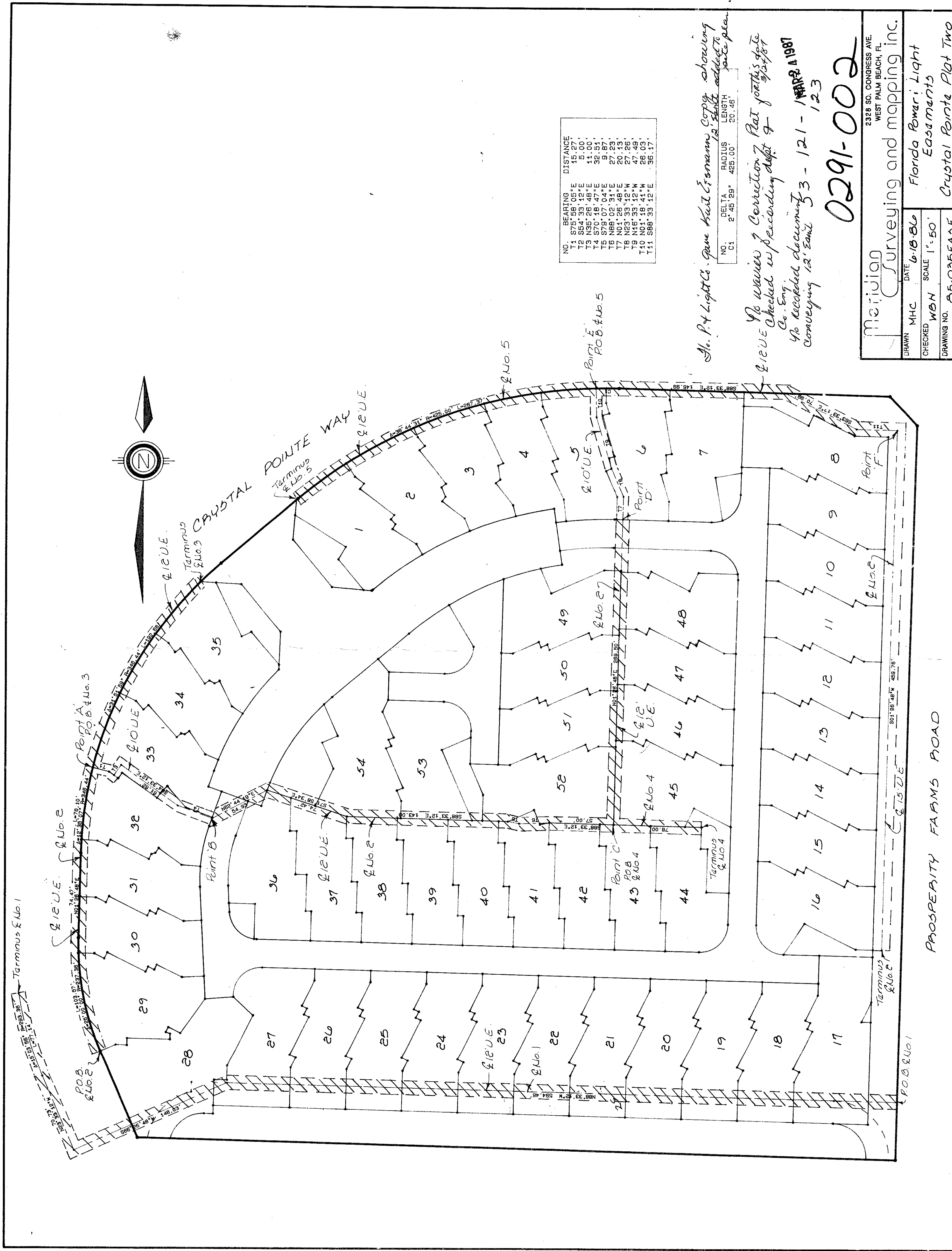


22/01



NO.	BEARING	DISTANCE
T1	S75°58'05"E	15.27'
T2	S54°39'18"E	5.00'
T3	S70°18'47"E	52.31'
T4	S70°18'47"E	52.31'
T5	S75°07'04"E	9.87'
T6	S75°07'04"E	9.87'
T7	N01°26'48"E	20.73'
T8	N23°33'12"W	27.86'
T9	N01°26'48"E	20.73'
T10	S75°07'04"E	9.87'
T11	S86°33'12"E	56.17'

St. P. Light Co. gave Karl Esmanow CDPA showing showing
 No waiver of Correction Plat for this plat
 No recorded document 3-12-1-1987
 conveying 12' easement 3-12-1-1987

0291-002

Meridian Surveying and mapping inc.
 2328 SO. CONGRESS AVE.
 WEST PALM BEACH, FL.
 DRAWN MHC DATE 6/18/86 Florida Power & Light
 CHECKED WBN SCALE 1"=50' Esasements
 DRAWING NO. 85-035EAD-E Crystal Pointe Plat Two